

The background of the entire image is a dark, monochromatic marbled pattern. It consists of irregular, vein-like shapes in shades of black and dark grey, creating a complex, organic texture that resembles natural stone or marble. The pattern is dense and covers the entire frame.

# Provence

Stone Collection

P O R C E L A I N T I L E S





Provence - Minima Dune (walls) | Roccia Dune (floor) | Dune Mix



# Provence

## Stone Collection

The Provence Collection captures the essence of fine French limestone, presenting an exceptionally realistic portrayal of natural stone patterns and textures. This collection offers three timeless shades - Dove, Dune, and Pearl, each crafted to bring elegance and authenticity to modern live and work spaces. Available in two distinct variants, Provence balances character and subtlety: Roccia features dramatic, sweeping veining for added visual depth, while Minima is designed with refined details for a more understated, harmonious look. Provence is offered in a range of versatile formats, including large slabs and a robust 20 mm grip finish, making it a versatile choice for projects that extend across indoor and outdoor spaces. Its design and durability make Provence an ideal option for surface cladding and flooring applications, allowing for seamless transitions between environments. Whether used as a focal point or a sophisticated backdrop, the Provence Collection brings the enduring beauty of French limestone into modern design.

6 COLOURS | 6 SIZES | 4 FINISHES



Provence - Minima Dove



Provence  
Minima Dove

Face 1

Face 2

Face 3







Provence - Minima Dune



Provence  
Minima Dune

Face 1

Face 2

Face 3

Face 3





Provence  
Minima Pearl

Face 1



Face 2



Face 3



Face 3







Provence  
Roccia Dove





Provence - Roccia Dune



Provence  
Roccia Dune

Face 1

Face 2

Face 3

Face 3







Provence - Roccia Pearl



Provence  
Roccia Pearl

Face 1

Face 2

Face 3

Face 3





# Provence Colours



Minima Dove



Minima Dune



Minima Pearl



Roccia Dove



Roccia Dune



Roccia Pearl



# Colours

## COLOUR

Minima Dune | Minima Pearl | Roccia Dune | Roccia Pearl

Minima Dove | Minima Dune | Minima Pearl | Roccia Dove | Roccia Dune | Roccia Pearl

Minima Dune

Roccia Dove | Roccia Dune | Roccia Pearl

Minima Dove | Minima Dune | Minima Pearl | Roccia Dove | Roccia Dune | Roccia Pearl

Roccia Dove | Roccia Dune | Roccia Pearl

Minima Dune | Roccia Dune

Minima Dune | Minima Pearl | Roccia Dune | Roccia Pearl

Minima Dove | Minima Dune | Minima Pearl | Roccia Dove | Roccia Dune | Roccia Pearl

Minima Dove | Minima Dune | Minima Pearl | Roccia Dove | Roccia Dune | Roccia Pearl

## FINISH

Natural

Natural

Structured

Honed

Natural

Structured

Grip

Natural

Natural

Natural

## SIZE(MM)

1200 x 2780 x 6

1200 x 1200 x 9

1200 x 1200 x 9

600 x 1200 x 9

600 x 1200 x 9

600 x 1200 x 9

1000 x 1000 x 20

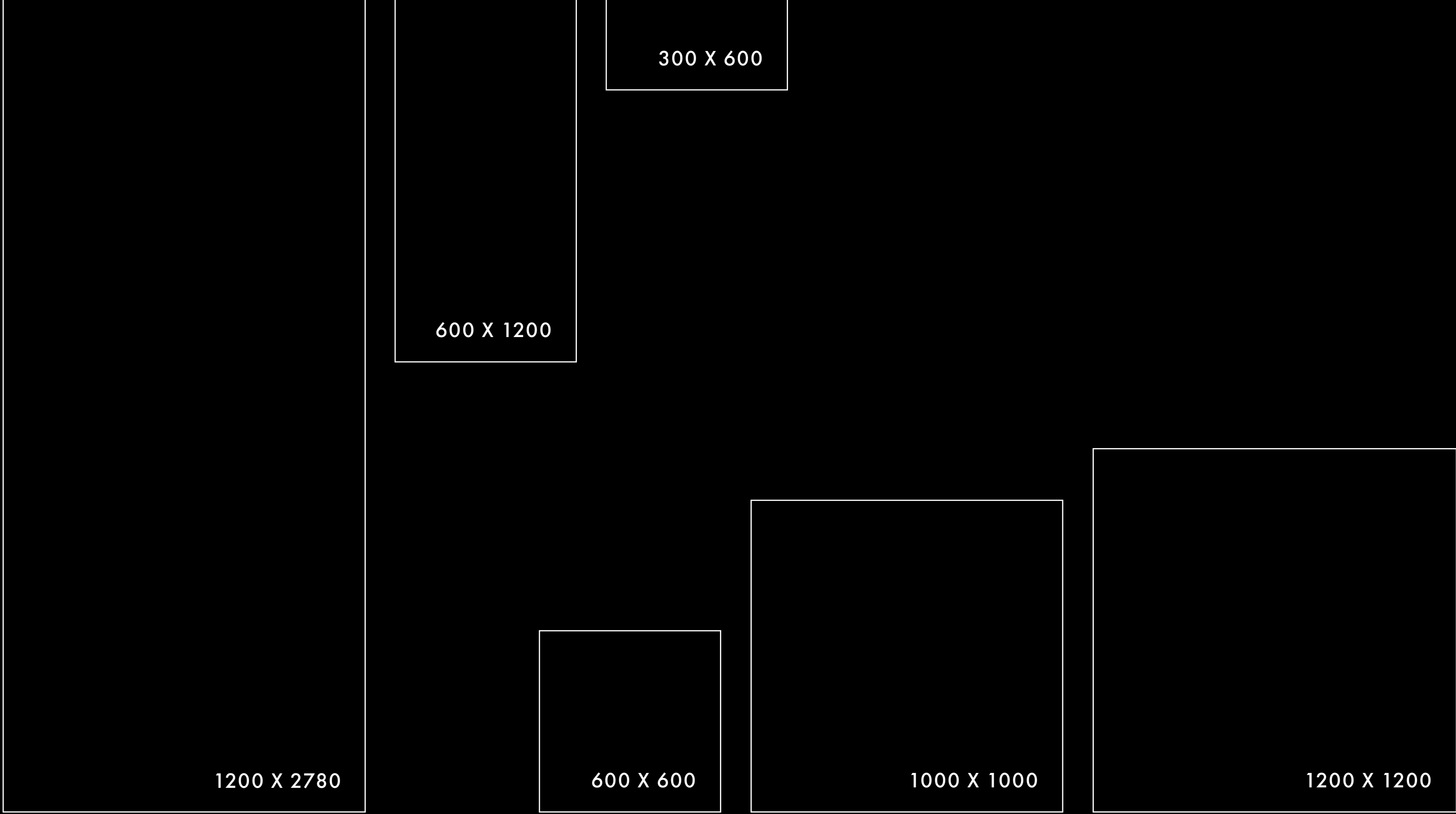
1000 x 1000 x 9

600 x 600 x 9

300 x 600 x 9

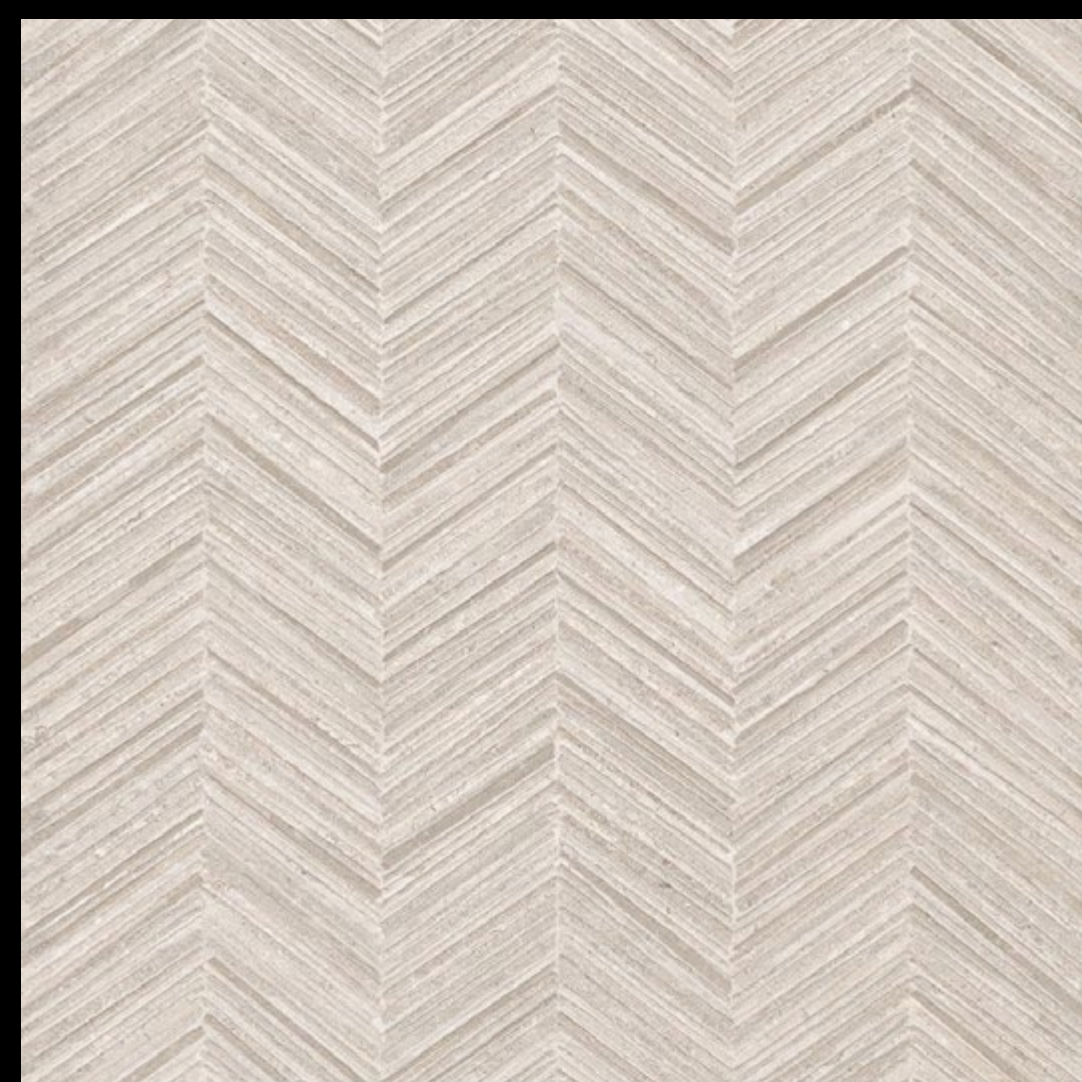


# Size Guide (mm)

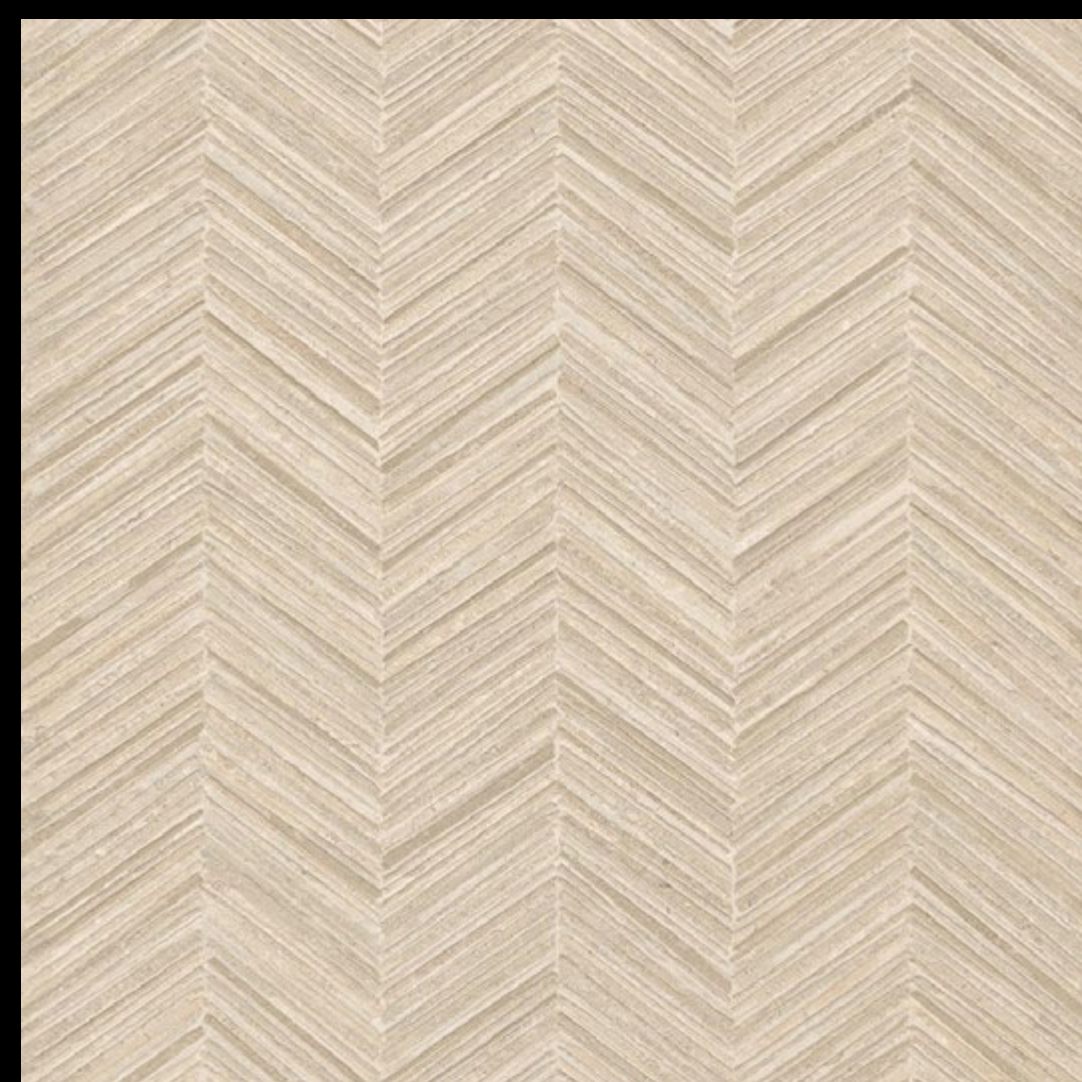




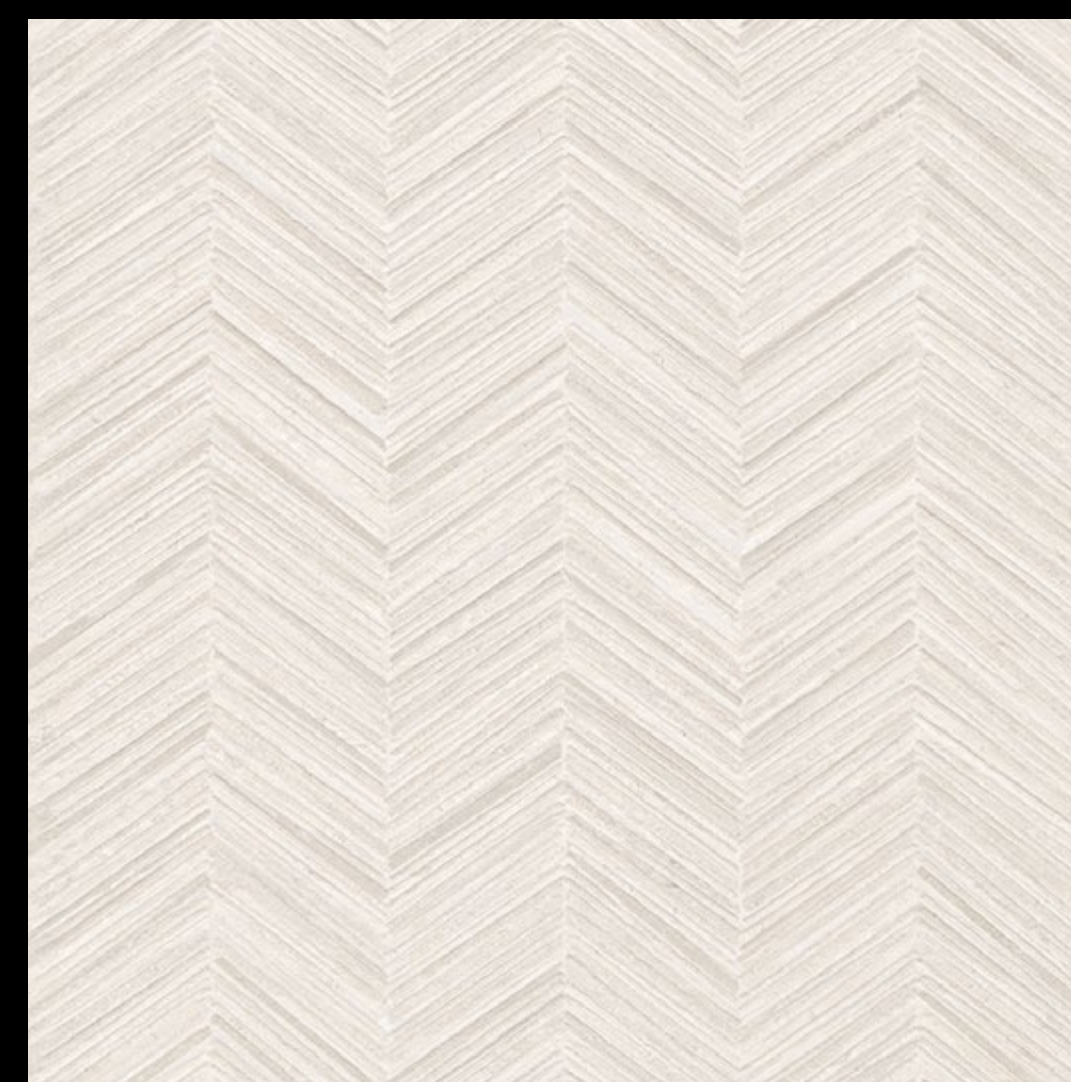
# Decors



Calce Bianca – Ritmo



Grigio Calcare – Ritmo



Sabbia – Ritmo

Colour

Dove Mix | Dune Mix | Pearl Mix

Finish

Natural

Size (MM)

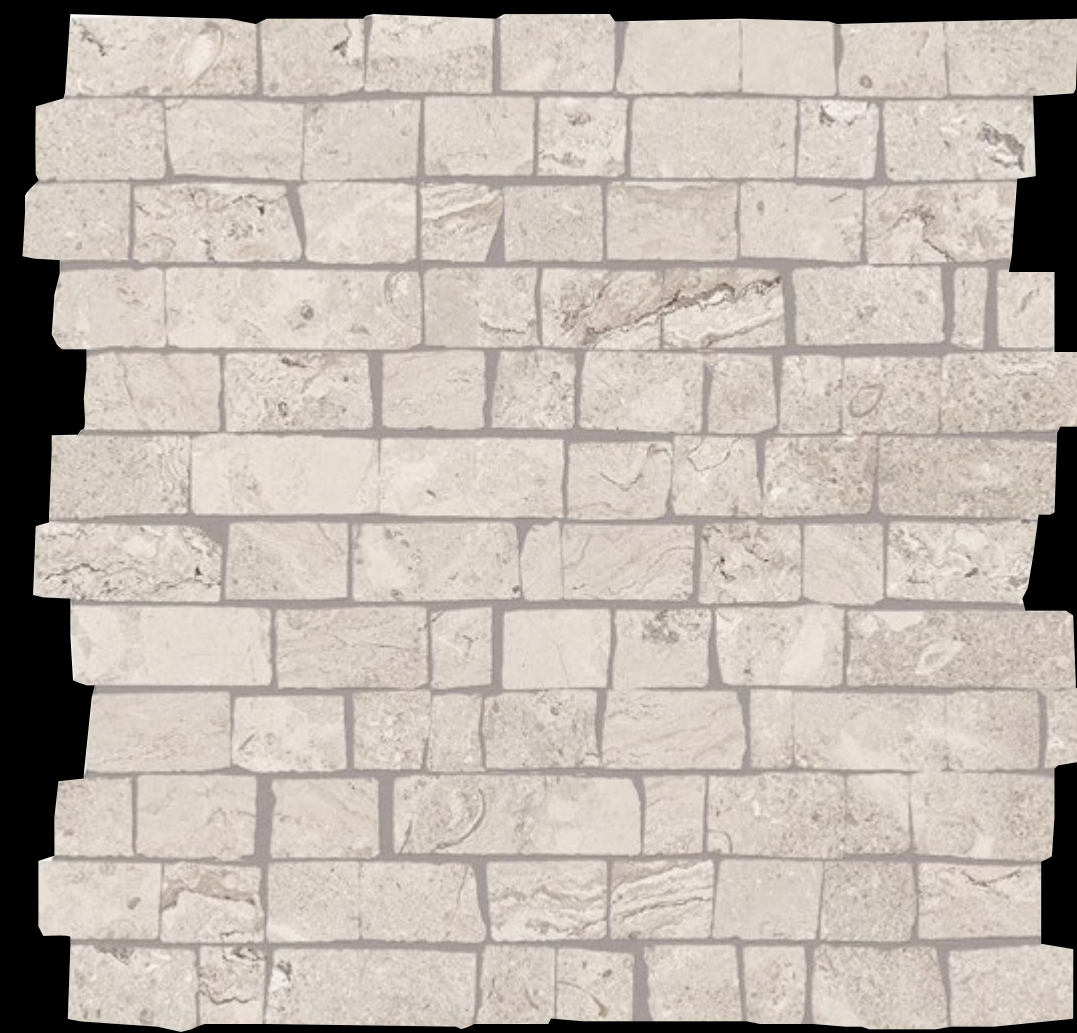
600 x 1200 x 9

Decor

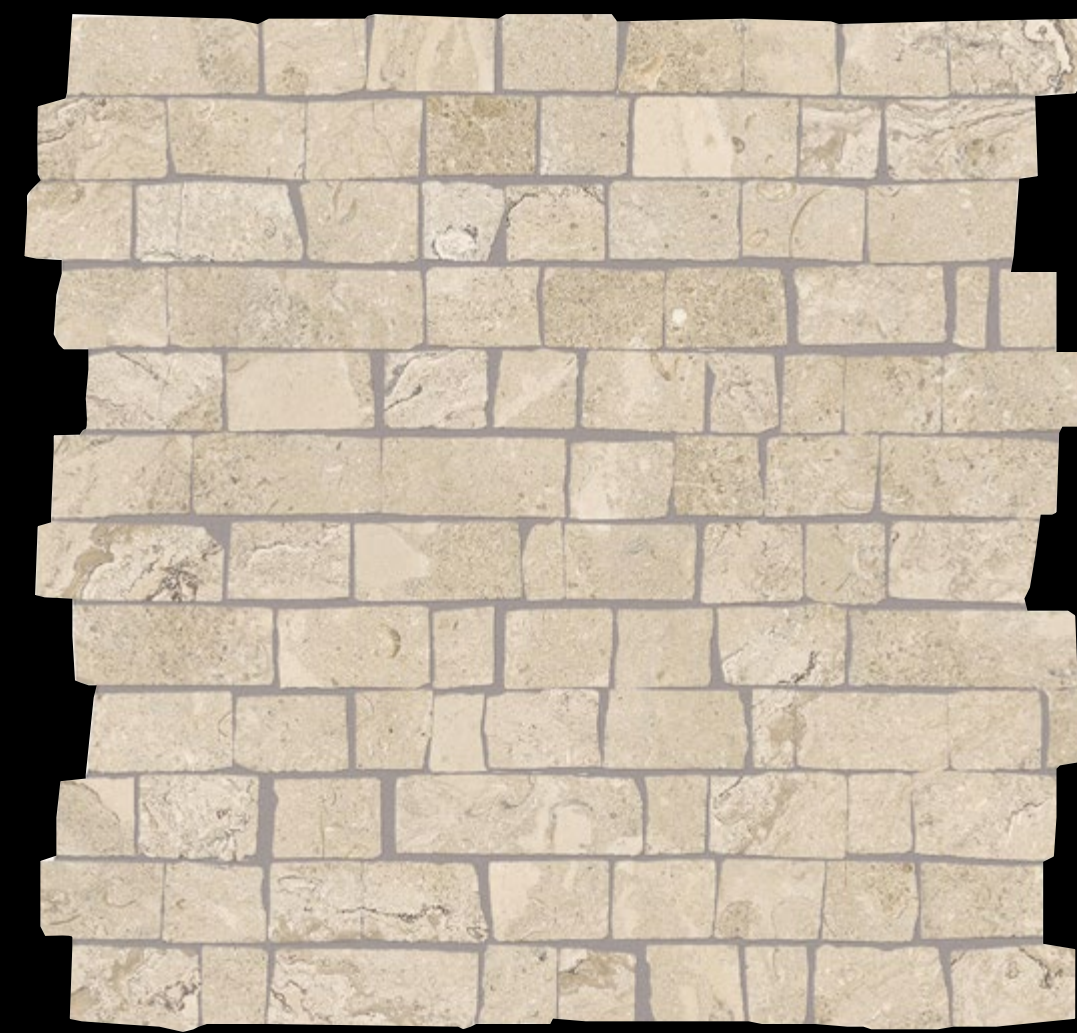
Pointes



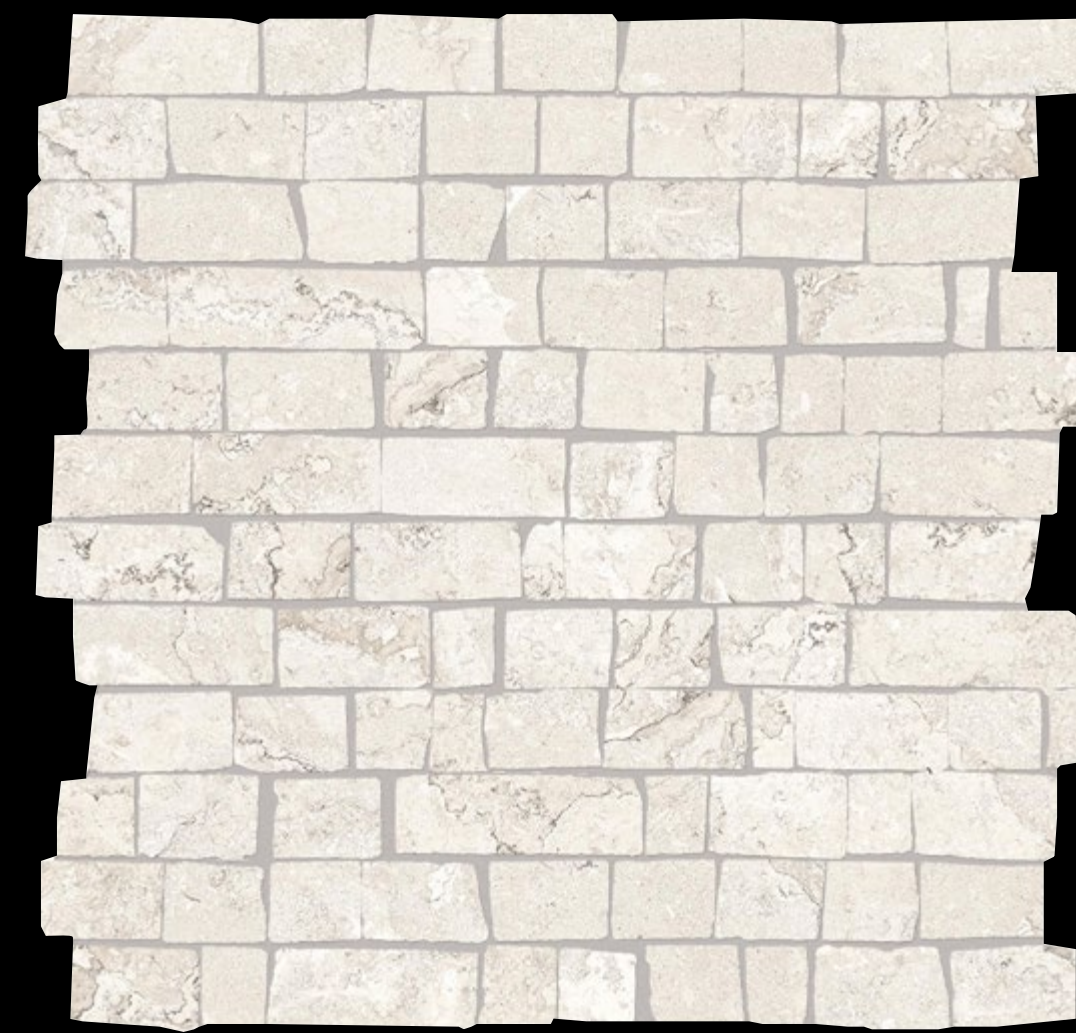
# Special Pieces & Mosaic



Dove Mix – Brick Mosaic



Dune Mix – Brick Mosaic



Pearl Mix – Brick Mosaic

Colour

Dove Mix | Dune Mix | Pearl Mix

Finish

Natural

Size (MM)

300 x 300 x 9

Special Piece

Brick Mosaic



# Special Pieces & Mosaic

Colour

Minima Dove | Minima Dune | Minima Pearl | Roccia Dove | Roccia Dune | Roccia Pearl

Finish

Natural

Size (MM)

300 x 300 x 9

Special Piece

Mosaic (48x48mm)



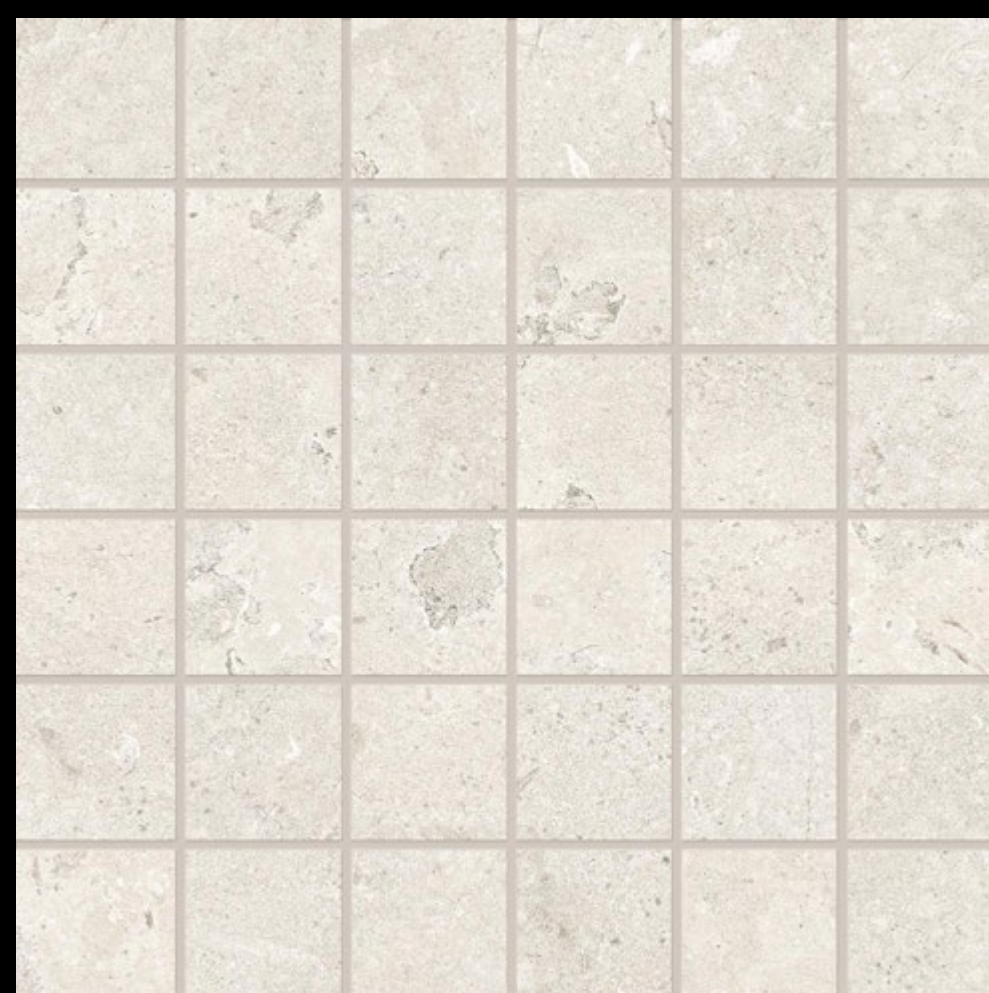
Roccia Pearl – Mosaic



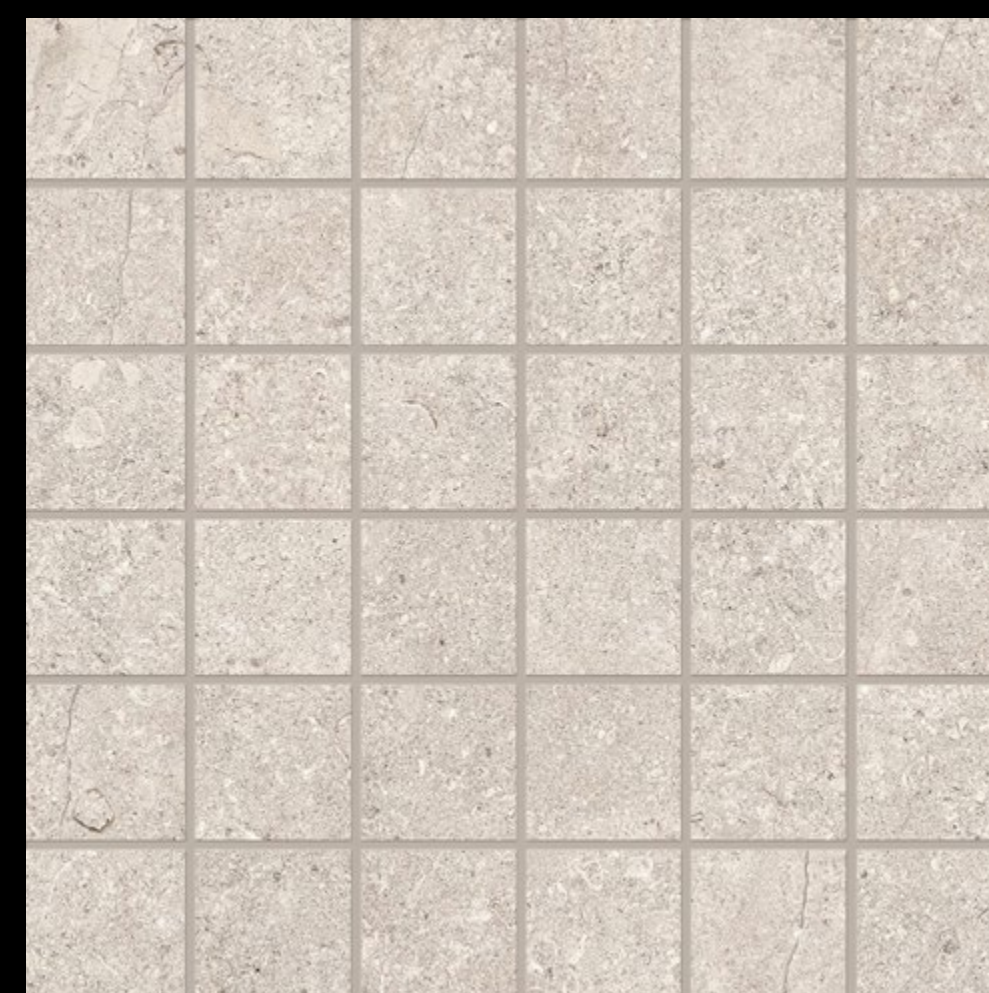
Roccia Dove – Mosaic



Roccia Dune – Mosaic



Minima Pearl – Mosaic



Minima Dove – Mosaic



Minima Dune – Mosaic





Provence - Pearl Mix



Provence - Dune Mix



# Environmental Certification



LEED® certification provides independent, third party verification that a building project meets the highest green building and performance measure. All certified projects receive a LEED® plaque, which is nationally recognised symbol demonstrating that a building is environmentally responsible, profitable and a healthy place to live and work. The environmental characteristics have been evaluated and found according to the requirements of content of recycled material for environmental assessment according to LEED® criteria. These products contribute to the increase in the LEED® rating of buildings where they are used.



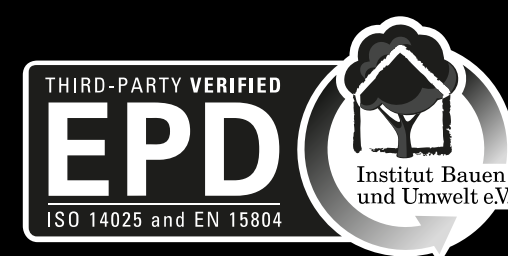
The EU Ecolabel helps you identify products and services that have a reduced environmental impact throughout their life cycle, from the extraction of raw material through to production, use and disposal. Recognised throughout Europe, EU Ecolabel is a voluntary label promoting environmental excellence which can be trusted. Ecolabel certification applies to building products such as ceramic tiles for residential and public flooring and wall-covering. The commission in charge of the certification system measures the environmental impact caused by the entire productive cycle; in the case of ceramic tiles, the verification starts from raw material quarrying through to manufacturing, distribution, installation and their final disposal. Our factories conform and are certified by the European Community standard Ecolabel and the production process is in complete harmony with the Ecolabel certification.



GREENGUARD Certification ensures that a product meets stringent standards for minimal emissions of volatile organic compounds (VOCs) into indoor air. This program provides assurance that products designed for indoor use adhere to strict chemical emissions limits, fostering the creation of healthier interiors. Manufacturers with GREENGUARD Certification gain credibility for their sustainability claims, supported by empirical technical data from an unbiased third-party organisation. The GREENGUARD Certification Program instills confidence by ensuring that indoor products meet strict chemical emissions limits, contributing to the creation of healthier interior spaces. This empowers manufacturers to produce and customers to identify products with low chemical emissions, thereby supporting air quality and environmental well-being.



NSF® has facilitated the development of more than 75 standards and protocols for sanitary food equipment, and has certified thousands of products as safe to use in restaurant and commercial kitchen settings. NSF® food equipment standards include requirements for material safety, design, construction and product performance. The products conform to the requirements of NSF/ANSI Standard 51 – Food Equipment Materials. NSF/ANSI 51 establishes minimum public health and sanitation requirements for materials and finishes used in the manufacture of commercial foodservice equipment.



An Environmental Product Declaration (EPD) is a concise document that transparently communicates the environmental performance of a product throughout its life cycle. It provides comprehensive information about the product's environmental impact, including aspects such as raw material extraction, production processes, energy consumption, and emissions. EPDs are based on standardised methodologies and enable consumers, businesses, and policymakers to make informed decisions by considering the environmental aspects of a product in a systematic and comparable way.



# P O R C E L A I N T I L E S

North London Showroom  
23 Temple Fortune Parade  
Finchley Road  
London NW11 0QS  
020 3141 3337

[www.porcelaintiles.co.uk](http://www.porcelaintiles.co.uk)

South London Showroom  
88 High Street Wimbledon  
London SW19 5EG  
020 3141 3337

[enquiry@porcelaintiles.co.uk](mailto:enquiry@porcelaintiles.co.uk)